

Precision meets Motion



WE'RE HAPPY TO COME TO YOU TOO!

***EWS*. Services**

By PROFESSIONALS for PROFESSIONALS

EWS
Tool Technologies



WORLDWIDE

Wherever you manufacture, wherever you need our products, we're there for you. Our network spanning Germany, Korea, the USA, China and Russia gives you the background you need.

EWS Tool Technologies

Motion, speed, precision – this is the world of EWS. We call it “Precision meets Motion”, because we are aware of the importance of precision for the future of our customers and target markets.

EWS Weigele GmbH & Co. KG

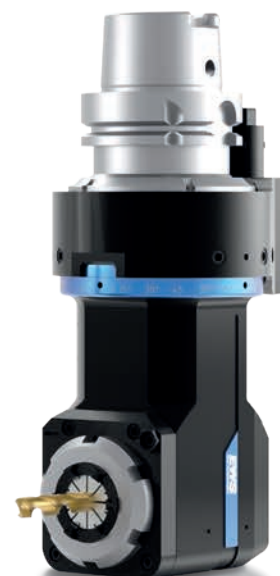
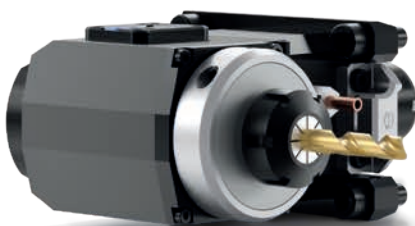
Maybachstr. 1 · D-73066 Uhingen

Tel. +49 (0)7161 93040-100

Fax +49 (0)7161 93040-30

info@ews-tools.de

www.ews-tools.de



EWS . Services

By PROFESSIONALS for PROFESSIONALS

COMMISSIONING

A good product on its own is by no means a guarantee of success these days. With our services, we want to actively assist our customers even after the sale of our products, and ensure ideal handling in the after-sales period.

INSTALLATION & COMMISSIONING ON SITE

Our experts take care of everything to ensure that nothing gets in the way of our products being used successfully right from the start. Through professional training in how to use the products you have purchased, you will not only save time and money, but you'll also safeguard your processes and be able to minimise downtimes.

OUR PERFORMANCE PROMISE*

- Shared installation of the tool system
- Functional check
- Training in the correct operation of the tool system
- Extensive product documentation, including maintenance recommendations

** Commissioning and programming are not included in the scope of services.*

ALL-INCLUSIVE PRICES FOR GERMANY

(all services and ancillary costs included)*

Arrival and departure	Daily flat rate
0 to 50 Km	€ 570
50 to 200 Km	€ 670
Over 200 Km	€ 670 + € 0.50/Km

** The costs quoted above cover a maximum period of 1 working day, including travel to and from the place of work. If an overnight stay is required, this will be charged at a flat rate of € 90. The same all-inclusive pricing applies to each further day.*

HIRING TOOL SYSTEMS*

Do you want to compensate bottlenecks with flexibility and keep the costs under complete control? Protect liquidity and only pay for products when you're actually earning money with them? Maybe you also simply want to try our products or only need a specialist tool for a short while? All of this is no problem with the tool hire service from EWS.

** Initially only for end users.*

OUR PERFORMANCE PROMISE

- Fully functioning and tested tools with the familiar EWS quality
- Attractive prices and a transparent cost structure
- We stipulate only the maximum rental period. You can terminate the rental agreement at any time within this period
- Once the agreement ends, you have a choice:
 - If you buy the hired tool system, we will take all the hire charges you have paid so far off the purchase price
 - You can simply give the tool back to us
 - Are you so impressed by the product that you want to purchase a completely new system? If so, we will give you 10% of the hire charge off the new price within 2 weeks of you returning the tool
- Billing conditions:
 - The service charge and monthly hire charge must be paid only at the end of the agreement or at the end of the year
 - Billing is only ever for full months
 - The agreement will end with the goods received stamp / delivery receipt issued at our premises in Uhingen

GROOVE IMPACT UNIT

Example package:

Resource	Brief text	Offer	HU.	Price
140204	69.4016WNCTXRLX115	1	unit	€ 5,228.00
New price of the tool package:				€ 5,228.00
Shift model:				l.
Costs per month:				€ 290.44
One-off service charge (5%)				€ 261.40

- All common alignment systems are also available. Any additional costs resulting from this will be added to the hire price (Trifix, W bar, etc.)
- Tools must be used and handled in accordance with our technical documentation
- If there is any incorrect operation, overloading or a crash leading to damage to the products, the costs of repair will be charged accordingly

HIGH TECH AT A LOW PRICE

Example tools:

Groove impact units	Unit	Price	Shift model	Service charge	Hire price per month
69.4016WNCTXRLX115	1	€ 5,228.00	I	€ 261.40	€ 290.44
69.4016WNNZX95	1	€ 5,945.00	II	€ 297.25	€ 495.50
69.3016WNCTXRLX100	1	€ 5,228.00	III	€ 261.40	€ 871.50
Module cutter					
64.4022CTXRLI2TKWZ70MB75	1	€ 4,479.00	I	€ 223.95	€ 248.83
64.50275480RLI2TKWZ70MB75	1	€ 4,838.00	II	€ 241.90	€ 403.20
64.3022CTXRLI2TKWZ65MB75	1	€ 3,967.00	III	€ 198.35	€ 661.20
Swivel heads					
63.4025CTX	1	€ 3,380.00	I	€ 169.00	€ 187.78
63.3020CTX	1	€ 3,250.00	II	€ 162.50	€ 270.83
63.6025NL	1	€ 3,649.00	III	€ 182.45	€ 608.17

Available for almost all common machines.
Just talk to us. We'll be happy to advise you.

**Offer not applicable to new constructions.*



■ The maximum contract term depends on the intensity of use:

SHIFT MODEL

SINGLE-SHIFT OPERATION
(MAX. 18 MONTHS)

SHIFT MODEL

TWO-SHIFT OPERATION
(MAX. 12 MONTHS)

SHIFT MODEL

THREE-SHIFT OPERATION
(MAX. 6 MONTHS)

Are you unsure which tool in our hire pool is the best one for your needs?
With our **ENGINEERING BASIC PACKAGE**, we are happy to help you make a decision and we can even take charge of this for you, providing EVERYTHING with complete cost transparency.



ADVICE & ENGINEERING

Are you unsure whether the tool can be used without problems on your machine, whether processing is feasible or whether the reliability of your processes can be guaranteed? Would you also like professional documentation and the opportunity to exclude any risks in advance?

No problem! Our **ENGINEERING BASIC PACKAGE** means we are able to develop customised solutions for you.

OUR PERFORMANCE PROMISE

- Analysis of the contour to be produced using your production drawings, including a feasibility check
- Checking of the working space situation on the machine (3D collision check)
- Drafting of an offer for the cutting equipment needed
**Currently only for groove impact units.*
- Professional support right from the first moment
- Presentation and reporting of results with recommendations
- On request*
 - Tests at our facility using original workpieces
 - Parts production for demonstration and measuring series
 - Support with the implementation process on site

**Options are associated with additional costs. Just give us a call.*

HERE'S HOW IT WORKS:

1. Establish contact and exchange information (offer creation)
2. Commission the Engineering basic package for a one-off fee of € 340 and communication of the technical specifications to service@ews-tools.de
3. Our engineers check your requirements in accordance with our performance promise.
**In the event of a query, we will contact the person specified.*
4. Transfer of the report, including recommendations for action



EWS Tool Technologies

EWS Weigle GmbH & Co. KG

Maybachstraße 1 · D-73066 UHINGEN
Telefon +49(0)7161-93040-100
Telefax +49(0)7161-93040-30
E-Mail: info@ews-tools.de
www.ews-tools.de

WSW Tooling Systems

WSW Spannwerkzeuge-Vertriebs GmbH

Maybachstr. 1 · D-73066 UHINGEN
Telefon +49(0)7161-93040-100
Telefax +49(0)7161-93040-30
E-Mail: info@wsw-collets.de
www.wsw-collets.de

COMMAND TOOLING SYSTEMS

Command Tooling Systems

13931 Sunfish Lake Blvd NW
Ramsey · MN 55303 USA
Telefon +1-763-576-6910
Telefax +1-763-576-6911
support@commandtool.com
www.commandtool.com

EWS Korea

EWS Korea Co. Ltd.

60-11 · Woongnam-Dong
Changwon
Kyoung-Nam Korea
Telefon +82 55-267-8085
Telefax +82 55-262-3118
E-Mail: info@ewskorea.co.kr
www.ewskorea.co.kr

EWS Russia

EWS Ltd.

Krassnaja str., 38
600015 Vladimir
Russland
Telefon +7-4922-541160
Telefax +7-4922-541160
E-Mail: info@ews-russland.ru
www.ews-russland.ru

EWS 易德斯 Turrets & Tool holders

JIANGSU EWS MACHINE CO.,LTD

37 hao xizhangzhenbeilu
fenghuangzhen zhangjiangang
China
Tel: +86-512-5842-9991
Fax: +86-512-5842-9990
yujo@ewskorea.co.kr

EWS Tool Technologies

埃维斯刀座技术(太仓)

EWS Tool Holder Technologies (Taicang Co. Ltd)

Beijing East Road No. 88
215400 Taicang · Jiangsu
P. R. China
Telefon +86 512 3306 2600
Telefax +86 512 3306 2601
E-Mail: sales.cnews-tools.de
www.ews-tools.cn

TOOL ARENA GO CONNECTING COMPANIES

Tool-Arena GmbH

Maybachstraße 1 · D-73066 UHINGEN
Telefon +49(0)7161-93040-100
E-Mail: info@tool-arena.com
www.tool-arena.com