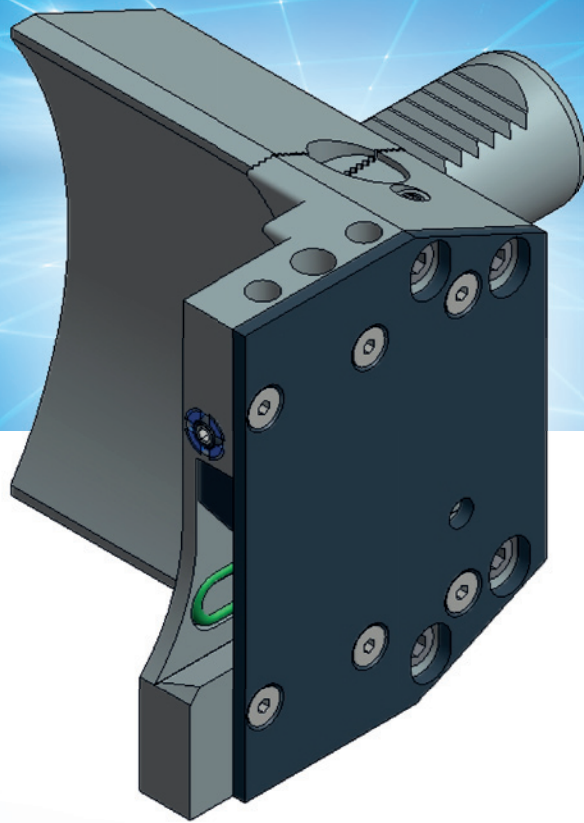


Precision meets Motion



EWS.tcJet

**The new EWS program for
optimal chip transport**



Scan to get
more information
online

EWS
Tool Technologies



EWS.tcJet

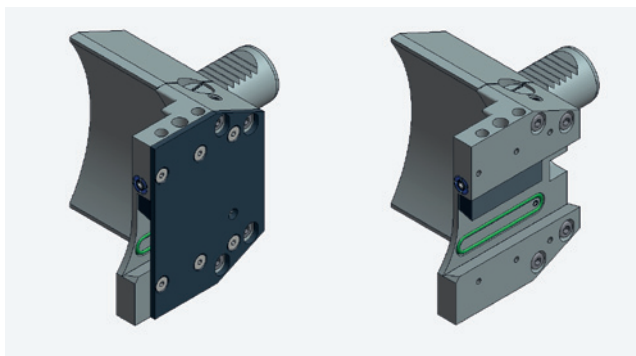
The new EWS program for optimal chip transport

Features

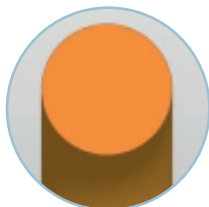
- tcJet transports the coolant through the inset directly to the cutter and guarantees optimal chip transport
- significantly longer service time and efficiency thanks to optimal cooling
- for normal and high-pressure applications for various tool holder fixtures and cutting insert manufacturers

Versions

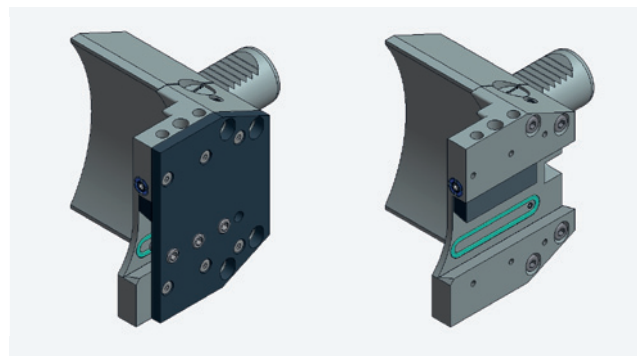
32.3032CTXRLÜKIK



- Standard covers (3mm thick)
- Sealing with O-Ring



32.3032CTXRLÜKIK-HD



- High pressure cover (6mm thick)
- Additional set screws to stabilize the cutter at the contact surface
- Sealing with seal ring
- Dimensioned for 70bar (1015 psi)

