



INNOVATIONS



BRAND OF
THE CENTURY

2022

EWS
Tool Technologies

www.deutsche-standards.de

EWS
Tool Technologies
www.ews-tools.de

EWS . Butterfly-Seal



Ready to take off

Advantages

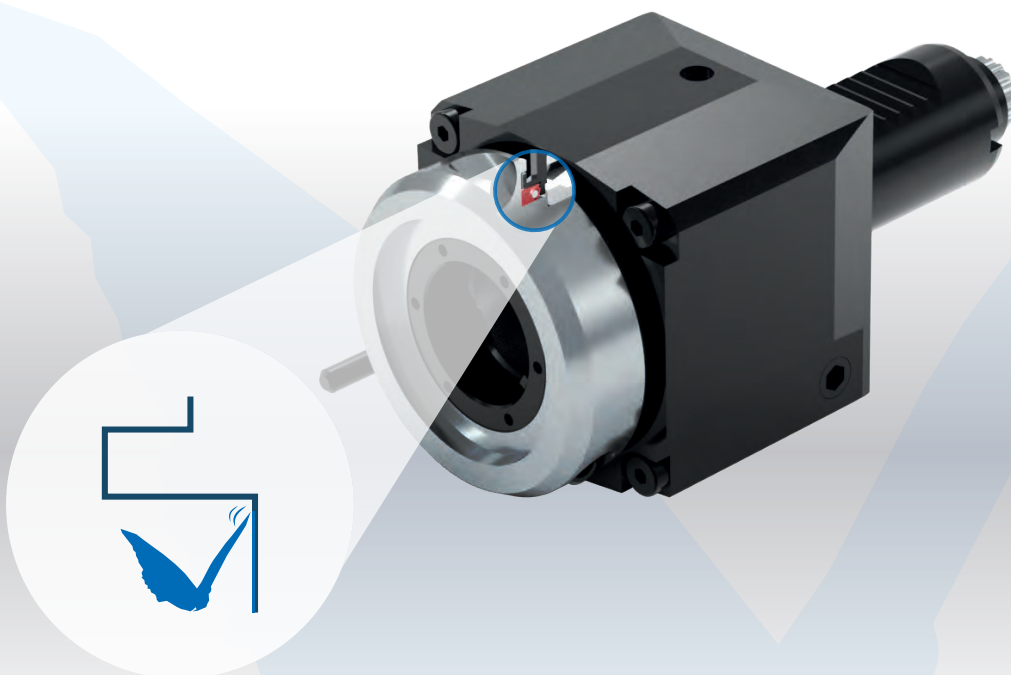
- The triad of the frontal labyrinth, special sealing elastomer and pre-tensioning ring form the centrepiece of this technology
- The labyrinth technology protects against direct contact with cooling emulsion and dirt particles
- The speed-related lift-off function of the sealing element reduces tool heating by up to 50%
- Thanks to the contraction effect of the sealing elastomer, the sealing lip closes off the path to the interior of the tool, ensuring maximum safety against the aspiration of emulsion in the cooling phase (Δt compensation).
- No inlet at the tool spindle caused by friction (50% of all service cases)
- If servicing is necessary: cheaper seal replacement instead of expensive spindle replacement



The sealing lip is in contact at low speed



The sealing lip takes off at high speed



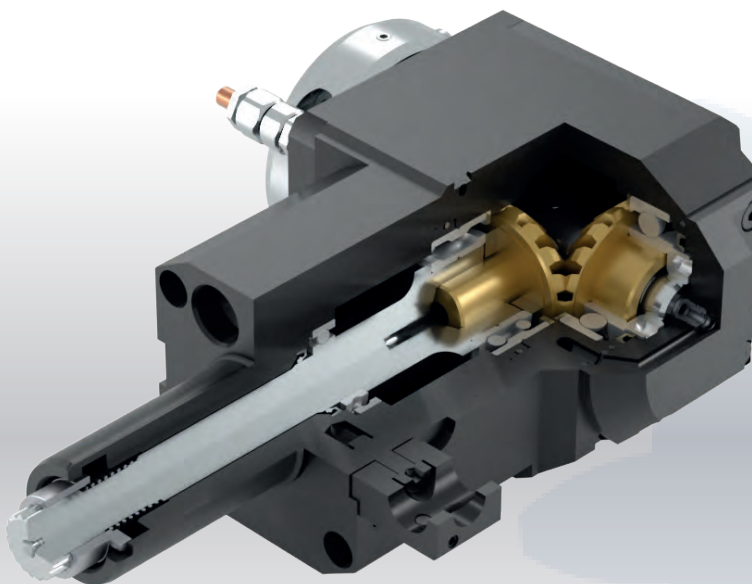
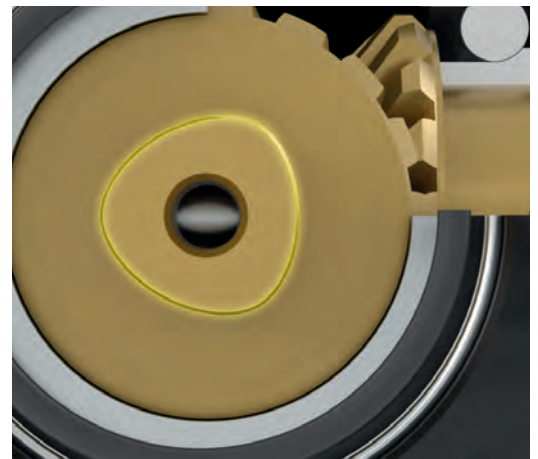


Polygonal shaft-hub connection

For centuries, the keyway or spline connection was considered to be the only solution for the transmission of torques. New options in the realm of production technologies are opening up new dimensions to developers of transmission units. In its new series, EWS is using the polygonal shaft-hub connection, thereby leveraging significant technological advantages:

Advantages

- The balanced geometry reduces the imbalance of the operating spindle towards zero, which has a positive effect on the vibration of the working spindle and therefore on the surface of the component. Added to this is the improved service life of the cutter and the increase in the lifespan of the entire tool system.
- The homogeneous distribution of force over the entire circumference means that up to 30% more power can be transferred with the same dimensions and the connection's resistance to impact and breakage increases many times over.





EWS Tool Technologies

EWS Weigele GmbH & Co. KG

Maybachstraße 1 · D-73066 Uhingen
Telefon +49(0)7161-93040-100
Telefax +49(0)7161-93040-30
E-Mail: info@ews-tools.de
www.ews-tools.de

WSW Tooling Systems

WSW Spannwerkzeuge-Vertriebs GmbH

Maybachstr. 1 · D-73066 Uhingen
Telefon +49(0)7161-93040-100
Telefax +49(0)7161-93040-30
E-Mail: info@wsw-collets.de
www.wsw-collets.de

COMMAND TOOLING SYSTEMS

Command Tooling Systems

13931 Sunfish Lake Blvd NW
Ramsey · MN 55303 USA
Telefon +1-763-576-6910
Telefax +1-763-576-6911
support@commandtool.com
www.commandtool.com

EWS Korea

EWS Korea Co. Ltd.

60-11 · Woongnam-Dong
Changwon
Kyoung-Nam Korea
Telefon +82 55-267-8085
Telefax +82 55-262-3118
E-Mail: info@ewskorea.co.kr
www.ewskorea.co.kr

EWS Russia

EWS Ltd.

Krassnaja str., 38
600015 Vladimir
Russland
Telefon +7-4922-541160
Telefax +7-4922-541160
E-Mail: info@ews-russland.ru
www.ews-russland.ru

EWS 易德斯 Turrets & Tool holders

JIANGSU EWS MACHINE CO.,LTD

37 hao xizhangzhenbeilu
fenghuangzhen zhangjiangang
China
Telefon +86-512-5842-9991
Telefax +86-512-5842-9990
yujo@ewskorea.co.kr

EWS Tool Technologies

埃维斯刀座技术(太仓)

EWS Tool Holder Technologies (Taicang Co. Ltd)

Beijing East Road No. 88
215400 Taicang · Jiangsu
P. R. China
Telefon +86 512 3306 2600
Telefax +86 512 3306 2601
E-Mail: sales.cnews-tools.de
www.ews-tools.cn

TOOL ARENA GO CONNECTING COMPANIES

Tool-Arena GmbH

Maybachstraße 1 · D-73066 Uhingen
Telefon +49(0)7161-93040-100
E-Mail: info@tool-arena.com
www.tool-arena.com

EWS Turkey

EWS Tutucu Sistemleri ve Taretleri Anonim Şirket

Aydınlı mah.Melodi No.2/19 Sk. Bilmo
San.Sit. 18-19
34956 Tuzla / Istanbul
Turkey
Telefon +90-216-593-22-44
E-Mail: mehmet@ewstools.com
www.ews-tools.de