

# WELCOME TO THE WORLD OF TOMORROW

FUTURE  
TECHNOLOGIES

# INNOVATIONS

INDUSTRY 4.0

TOOLING SYSTEMS

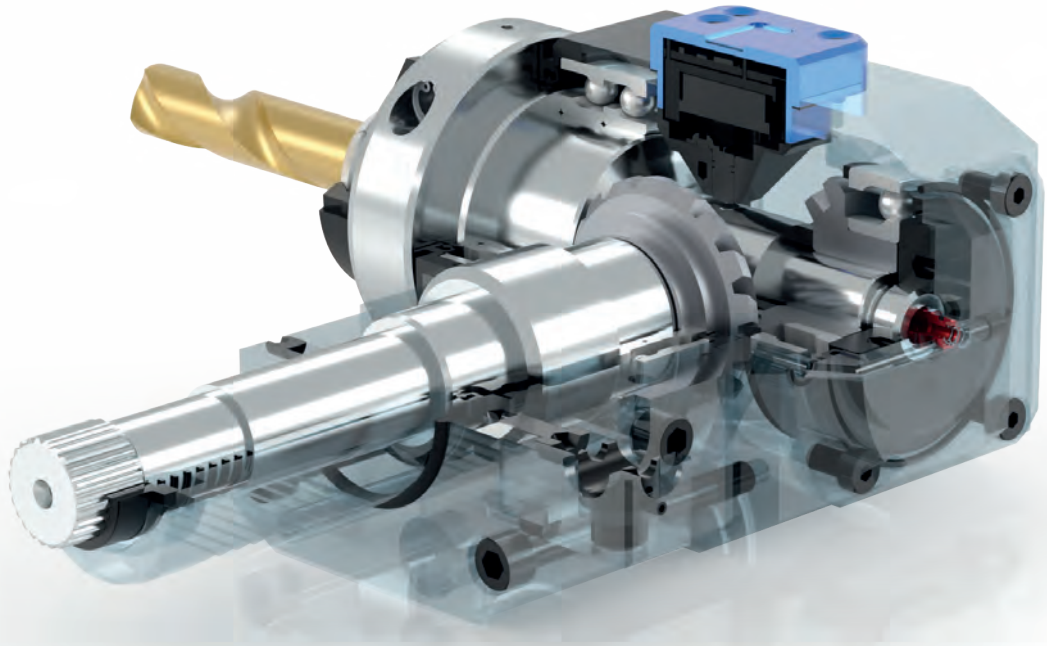


**EWS Group**

[www.ews-tools.de](http://www.ews-tools.de)



**The genius of an invention  
lies in the benefits,  
not in the complexity of  
its embodiment.**



# INNOVATION

---

## **What we are made of ...**

Motion, speed, precision – this is the world of EWS. We call it “Precision meets Motion”, because we are aware of the importance of precision for the future of our customers and target markets.

Our focus is on highest quality standards and utmost commitment to ensure an optimal design of our products in form and function. For this purpose, we systematically invest in state-of-the-art production lines and develop methods for quality assurance in cooperation with external institutions.

Our top performance in development and production is backed up by the high level of training of our staff members.

Competence and reliability in our advisory services, our daily communication and project management – these are the core elements convincing our customers of our performance and services over and over again.





### EWS Germany

Production, Development,  
Distribution, Service



WSW Spannwerkzeuge-  
Vertriebs GmbH



## EWS Korea



### EWS Korea

Production, Development,  
Distribution, Service



Command Tooling Systems  
Production, Development,  
Distribution, Service



## EWS Russia



### EWS Russia

Distribution  
Service



EWS Taichang (China)  
Distribution  
Service



### Tool-Arena

Online Market Place



EWS Turkey  
Distribution  
Service

## EWS Turkey

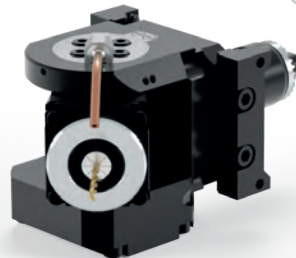


# PRODUCT PORTFOLIO

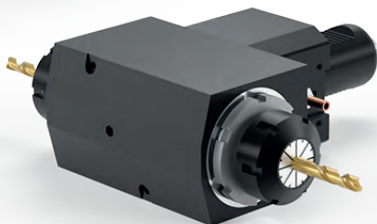
## DRIVEN TOOLS

For the ideal tool clamping and translation, over 15,000 different driven tool systems are available.

**Swivel Head**



**Radial drilling and milling heads**



**EWS.Slot**



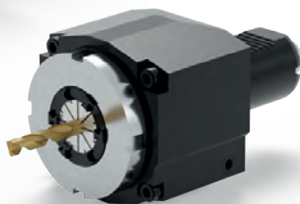


**EWS .Gear hobber**

**EWS .millLine**



**Axial drilling and milling heads**



**EWS .Multiform**







# PRODUCT PORTFOLIO

## Static tools and special solutions

Over 20,000 standard and special holders for all turning requirements.

**EWS .SpinJet**



**Static holders**



**EWS .TAPMATIC**





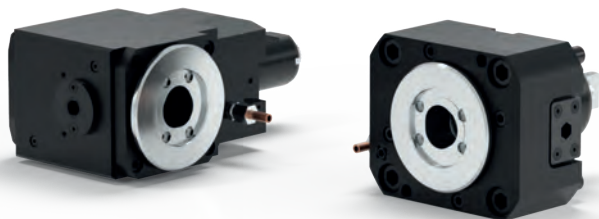
## Change systems and holders

Our product portfolio contains all standard interfaces and also EWS.CAPTO, KM, HSK or SK.

***KM interface***



***EWS.CAPTO™***



***HSK interface***

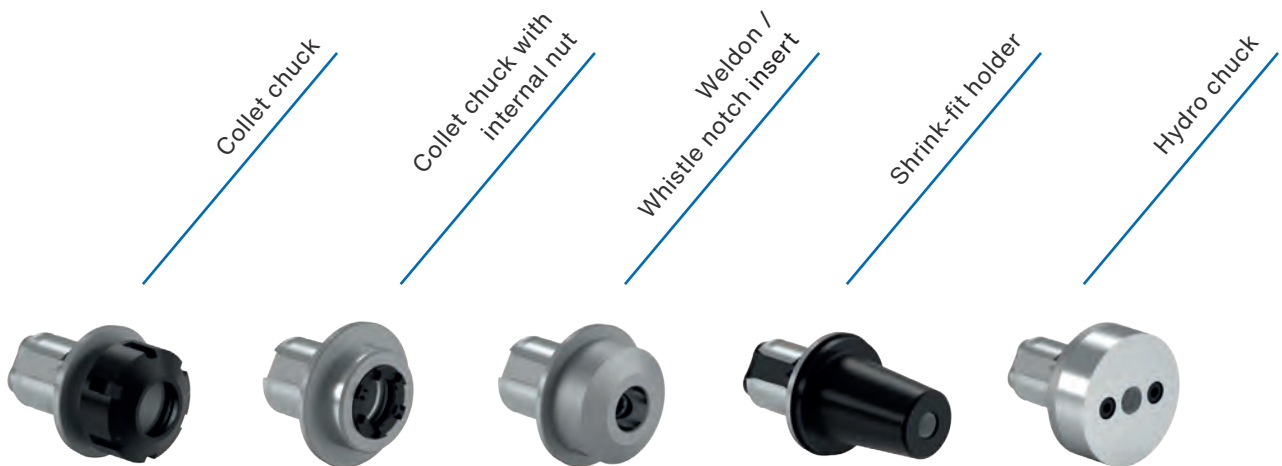




# **EWS .Varia VX**

## **The quick-change system**

- Tool change within seconds
- No risk of injury from the side attached operating screw
- No dangerous loosening of a nut or screw in the cutting area
- Mechanically loaded tool ejection, no sticking
- Safe power transmission via polygon
- Internal cooling transmission through diametrical acting membrane seal
- Optimal concentricity due to the superimposed cone-face system







**Races are won at  
the pit stop!**



Shell mill holder

Tapping head Softsynchro®

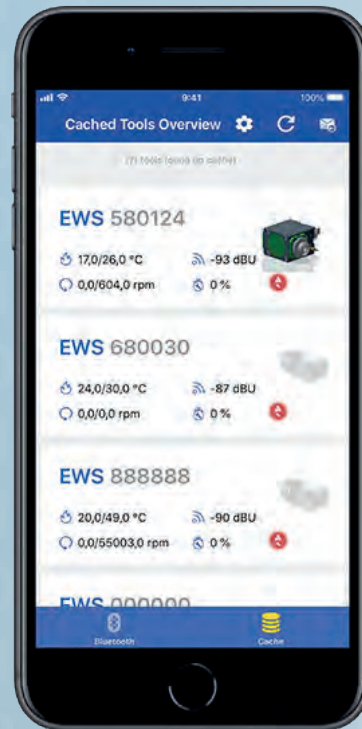
Floating toolholder  
collet chuck

Plug

Adapter for Iscar  
MultiMaster

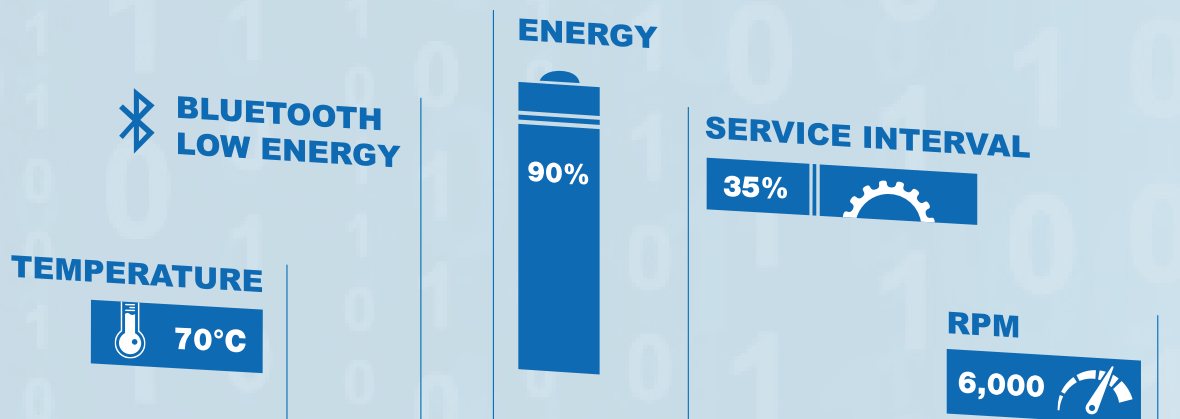


# EWS . CyberCon4





# The digital transformation



## Industry 4.0, China 2025 IIOT -

### The digital transformation

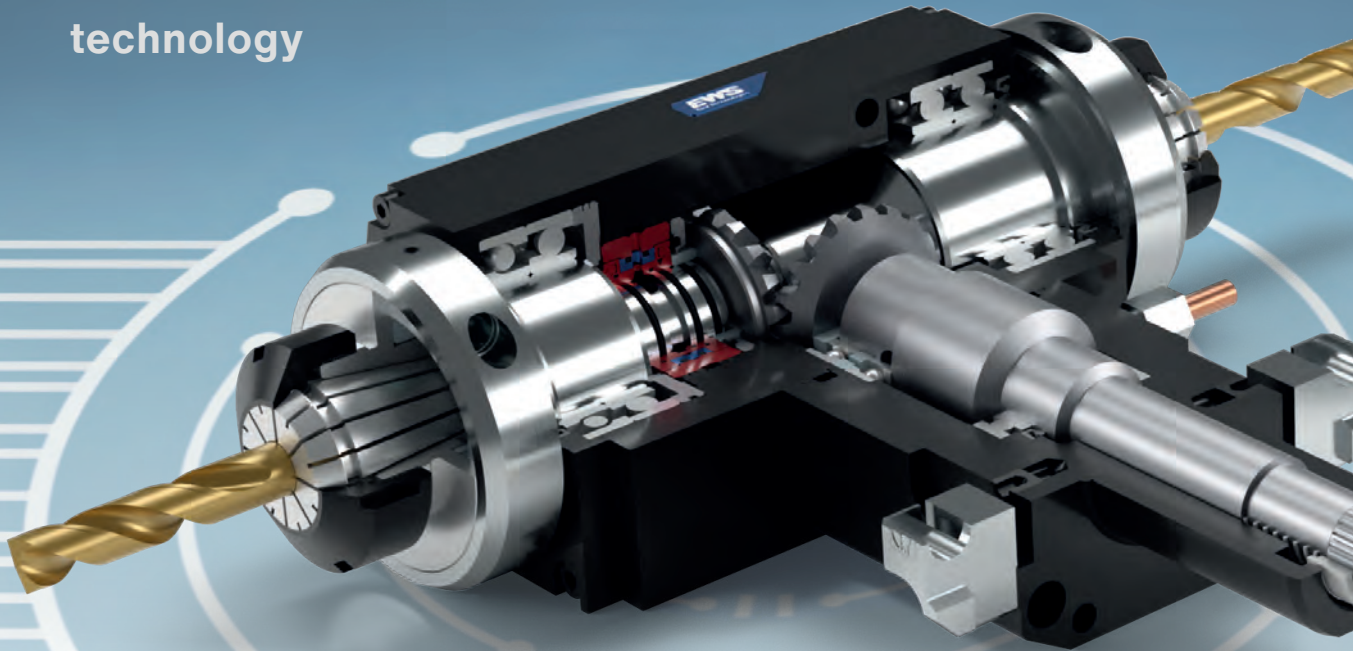
EWS.CyberCon4 is the first step into the age of digital transformation. The digital concept is open to cooperation partners in order to offer users as much standard as possible.

The data can be read on the tablet or smartphone via an app. However, that is only part of the possibilities. EWS.CyberCon4 is a component of the entire IoT concept for the future.





High speed and high pressure  
are combined in new sealing  
technology



## **EWS . HPC-Line**

---

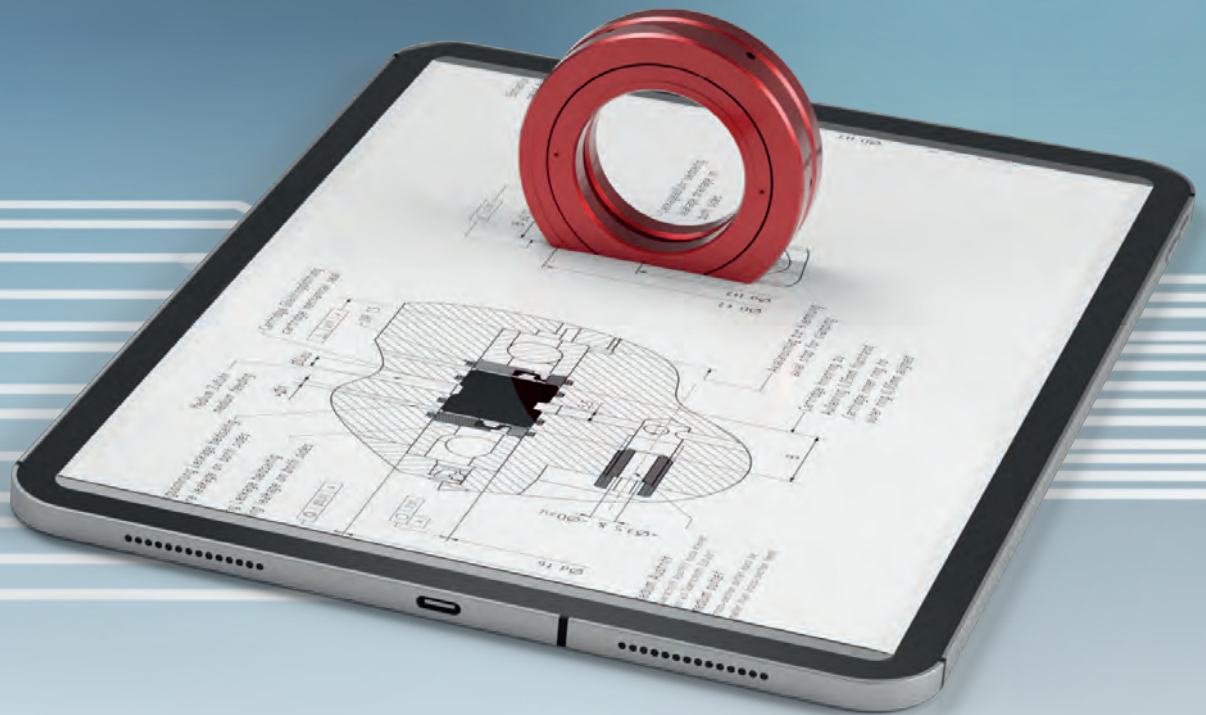
Full dry run

High pressure up to 70 bar

Nmax up to 12,000rpm

Minimum quantity lubrication

High-precision ceramic-coated  
sealing elements



# CAD DATA



**Optimized data quality for  
collision analysis according  
to DIN 4000**

Error detection

STP available in the  
online catalogue

Machine runtime  
optimization

Quality assurance

Digital twin

## WORLDWIDE

Wherever you produce, wherever you need our products, we are at your disposal. Our networks in Germany, Korea, USA, China, Russia and Turkey provide you with the necessary background.



Early 2008, Command Tooling Systems became the newest member of the EWS group. Command is a leading manufacturer of tools for CNC machining centers. This expansion of the EWS group will better serve the growing markets for milling and turning machines.

In addition to Germany and South Korea, EWS now offers manufacturing and full service in North America to better serve its customers worldwide.

[www.commandtool.com](http://www.commandtool.com)



# **EWS Korea**

---



In the year 1999 EWS Korea was established. In the meantime it is 52 staff members in the areas of construction, production and sales who attend to the Asian market. Leading machine manufacturers make use of the competence and the global network of the EWS Group for their applications and the service of their customers.

In addition to tool holders, the product range primarily includes tool turrets for CNC lathes.

[www.ewskorea.co.kr](http://www.ewskorea.co.kr)



# RESPONSIBILITY

---

## Specifically for the nature

What we can do for the sake of our environment, we want to do: Our 160 KWp photovoltaic system generates electricity of about 155 MWh/year, which supplies about 45 households, thus reducing the CO<sub>2</sub> output by 108 tons.

Our air cleaning plant with heat recovery and the use of thermal exhaust air as well as the conversion of mechanical friction energy into heat has enabled us to reduce our gas consumption by up to 50 %.



CEO Matthias Weigele







#### Heart for Children

Heart for Children Deutschland e. V. sponsors a new Children's Village in Uganda where orphans and other children find a home, education and thus the opportunity to build their own future. The association where Matthias Weigle and further EWS staff members belong to the founding members has set itself the goal to actively support the project with personal commitment and many actions as well as concerts staged in the EWS Arena. The revenue from these events will always fully benefit the Children's Village. [www.heart4children.de](http://www.heart4children.de)



#### EWS Arena (indoor sporting arena)

Sports are associated with dynamics and objectives, with tactics and endurance and last but not least with companionship and capacity for teamwork. Here we see clear parallels to our corporate philosophy. EWS is pleased with the naming of "EWS Arena" putting accents which are in accordance with the company mission and demonstrate the ties with our region.



#### EWS and Frisch Auf! Göppingen


EWS and the handball club Frisch Auf! Göppingen from the German First League share a long-standing partnership. Since 2005, the players have worn the EWS logo on their back in First League or EHF Cup games. It is far more than just a business connection; it is an established partnership. Precision meets Motion!



 CONNECTING COMPANIES

# THE ONLINE MARKETPLACE FOR THE MACHINING INDUSTRY

**In the Tool-Arena you will find exactly what you are looking for – fast, system-based and easy.**

 The Tool-Arena is the independent marketplace for products in the field of machining including a range of different manufacturers. Benefit from an almost completely digitalized procurement process.

Never before has it been so easy and comfortable to inform yourself, compare products and order.

With intuitive search systems you can quickly and unerringly find the right products, via the 3D configurator get to the digital twin or directly to the order.

The high-quality brands of our partners guarantee you above-average results – even under the toughest conditions.

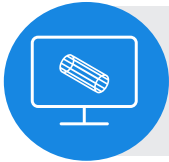
**REGISTRATE NOW  
FOR FREE:  
[WWW.TOOL-ARENA.COM](http://WWW.TOOL-ARENA.COM)**





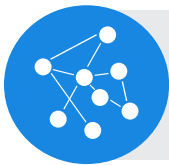
### One platform, many producers, thousands of products

Purchase from your usual supplier via the Tool-Arena, view prices and availability online



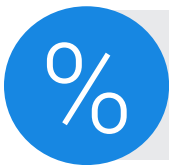
### All tool data available online

Extensive 3D database, AI-supported search functions, standardized data: DIN 4000 and ISO 13399



### Consistent and simple networking

Efficient data exchange with all listed suppliers, connection of ERP systems via EDI interface possible



### Tool-Arena Price Promise

Purchasing as you know it: Your agreed discounts and special conditions are stored in the Tool-Arena automatically.

## YOUR BRAND IS IN FOCUS

You are a manufacturer of products in the field of machining or production, distribute yourself or use a distribution network that you would like to integrate into the Tool-Arena?

In terms of networking, Tool-Arena enters into strategic partnerships with global players, hidden champions, SMEs and industry experts. Our goal: to shape the digital change together. Use the Tool-Arena to retain existing customers and win new customers.

## YOUR BENEFITS A PARTNER

- ✓ Direct sales and/or integration of your sales structure and your dealers
- ✓ Higher visibility on Google and other platforms
- ✓ Enable your customers to combine your products with products from other manufacturers
- ✓ Online shop styled in your own CI

**TOOL-ARENA GMBH**  
Maybachstr. 1  
73066 Uchingen – Germany

+49 (0) 7161 6539560  
info@tool-arena.com  
www.tool-arena.com





## **EWS** Tool Technologies

**EWS Weigele GmbH & Co. KG**  
Maybachstraße 1 · D-73066 Uchingen  
Telefon +49(0)7161-93040-100  
Telefax +49(0)7161-93040-30  
E-Mail: [info@ews-tools.de](mailto:info@ews-tools.de)  
[www.ews-tools.de](http://www.ews-tools.de)

## **WSW** Tooling Systems

**WSW Spannwerkzeuge-Vertriebs GmbH**  
Maybachstr. 1 · D-73066 Uchingen  
Telefon +49(0)7161-93040-100  
Telefax +49(0)7161-93040-30  
E-Mail: [contact@wsw-tools.de](mailto:contact@wsw-tools.de)  
[www.wsw-tools.de](http://www.wsw-tools.de)

## **COMMAND** TOOLING SYSTEMS

**Command Tooling Systems**  
13931 Sunfish Lake Blvd NW  
Ramsey · MN 55303 USA  
Telefon +1-763-576-6910  
Telefax +1-763-576-6911  
[support@commandtool.com](mailto:support@commandtool.com)  
[www.commandtool.com](http://www.commandtool.com)

## **EWS Korea**

**EWS Korea Co. Ltd.**  
80-101, Golden root-ro,  
Juchon-myeon, Gimhae-si,  
Gyeongsangnam-do, Korea  
Telefon +82 55-267-8085  
Telefax +82 55-262-3118  
E-Mail: [info@ewskorea.co.kr](mailto:info@ewskorea.co.kr)  
[www.ewskorea.co.kr](http://www.ewskorea.co.kr)

## **EWS Russia**

**EWS Ltd.**  
Krassnaja str., 38  
600015 Vladimir  
Russland  
Telefon +7-4922-541160  
Telefax +7-4922-541160  
E-Mail: [info@ews-russland.ru](mailto:info@ews-russland.ru)  
[www.ews-russland.ru](http://www.ews-russland.ru)

## **TOOL ARENA** GO CONNECTING COMPANIES

**Tool-Arena GmbH**  
Maybachstraße 1 · D-73066 Uchingen  
Telefon +49(0)7161-93040-100  
E-Mail: [info@tool-arena.com](mailto:info@tool-arena.com)  
[www.tool-arena.com](http://www.tool-arena.com)

## **EWS** Tool Technologies

埃维斯刀座技术(太仓)

## **EWS Tool Holder Technologies (Taicang Co. Ltd)**

Beijing East Road No. 88  
215400 Taicang · Jiangsu  
P. R. China  
Telefon +86 512 3306 2600  
Telefax +86 512 3306 2601  
E-Mail: [sales.cnews-tools.de](mailto:sales.cnews-tools.de)  
[www.ews-tools.cn](http://www.ews-tools.cn)

## **EWS Turkey**

**EWS Tutucu Sistemleri ve  
Taretleri Anonim Şirket**  
Aydınlı mah. Melodi No.2/19 Sk. Bilmo  
San. Sit. 18-19  
34956 Tuzla / İstanbul  
Turkey  
Telefon +90-216-593-22-44  
E-Mail: [mehmet@ewstools.com](mailto:mehmet@ewstools.com)  
[www.ews-tools.de](http://www.ews-tools.de)